

SKAGEN NORDSTRAND

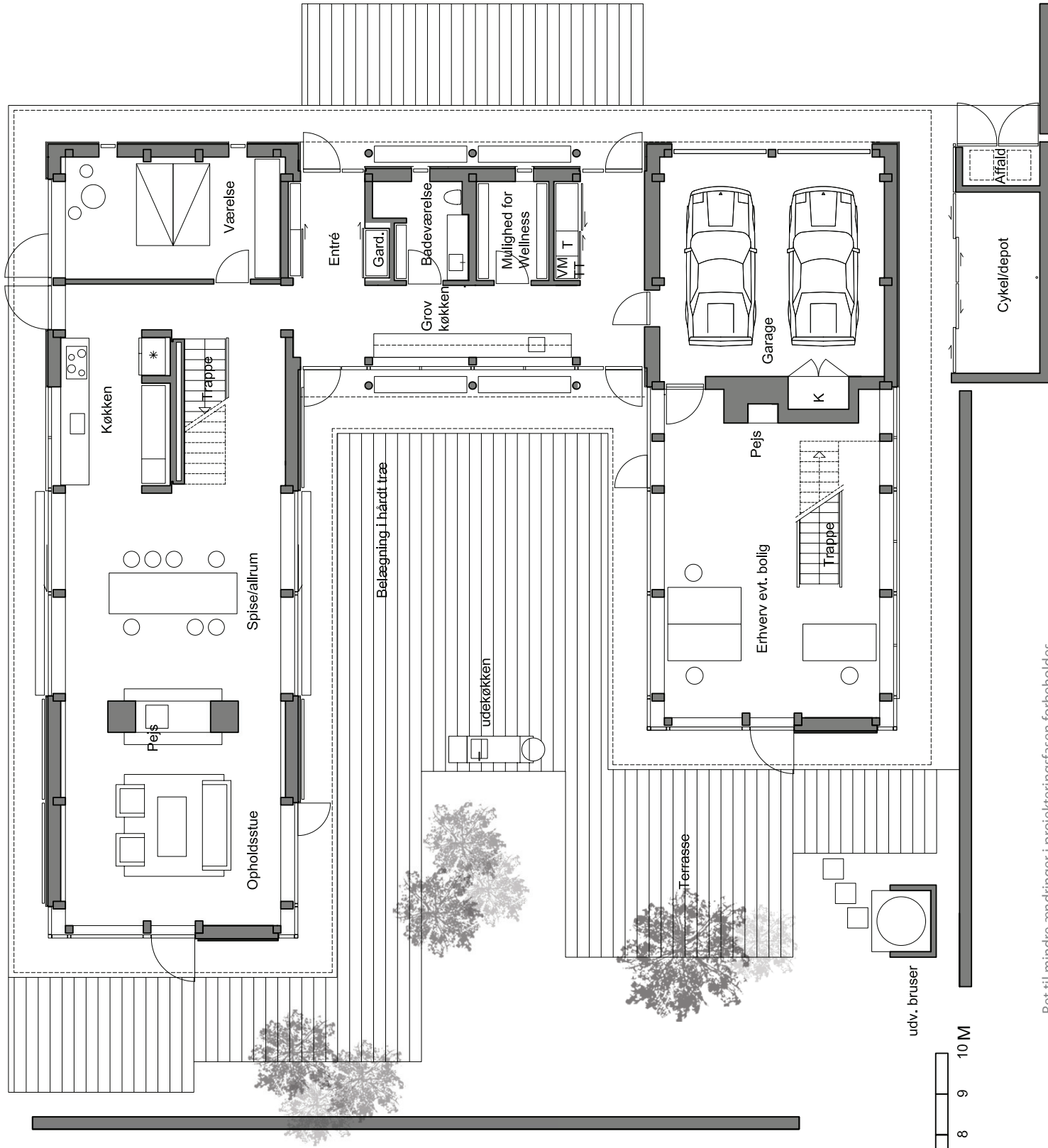
KLITGÅRDEN | KUNSTNERHUSET | HAVHUSET

KLITGÅRDEN TYPE K-A

| | |
|------------------------|--------------------|
| Stueetage: | 165 m ² |
| Boligareal: | 52 m ² |
| Erhverv | 253 m ² |
| Solgård incl. terrasse | 152 m ² |
| Garage | 38 m ² |

| | |
|-------------|--------------------|
| 1. sal: | 115 m ² |
| Boligareal: | 93 m ² |
| Erhverv | 4 m ² |
| Altan | |

| | |
|----------------|--------------------|
| I alt: | 280 m ² |
| Boligareal | 146 m ² |
| Erhverv | 426 m ² |
| Samlet areal | 156 m ² |
| Terrasse/Altan | 38 m ² |
| Garage | |



STUEPLAN

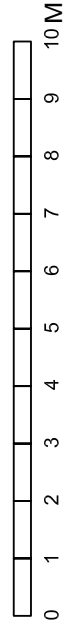
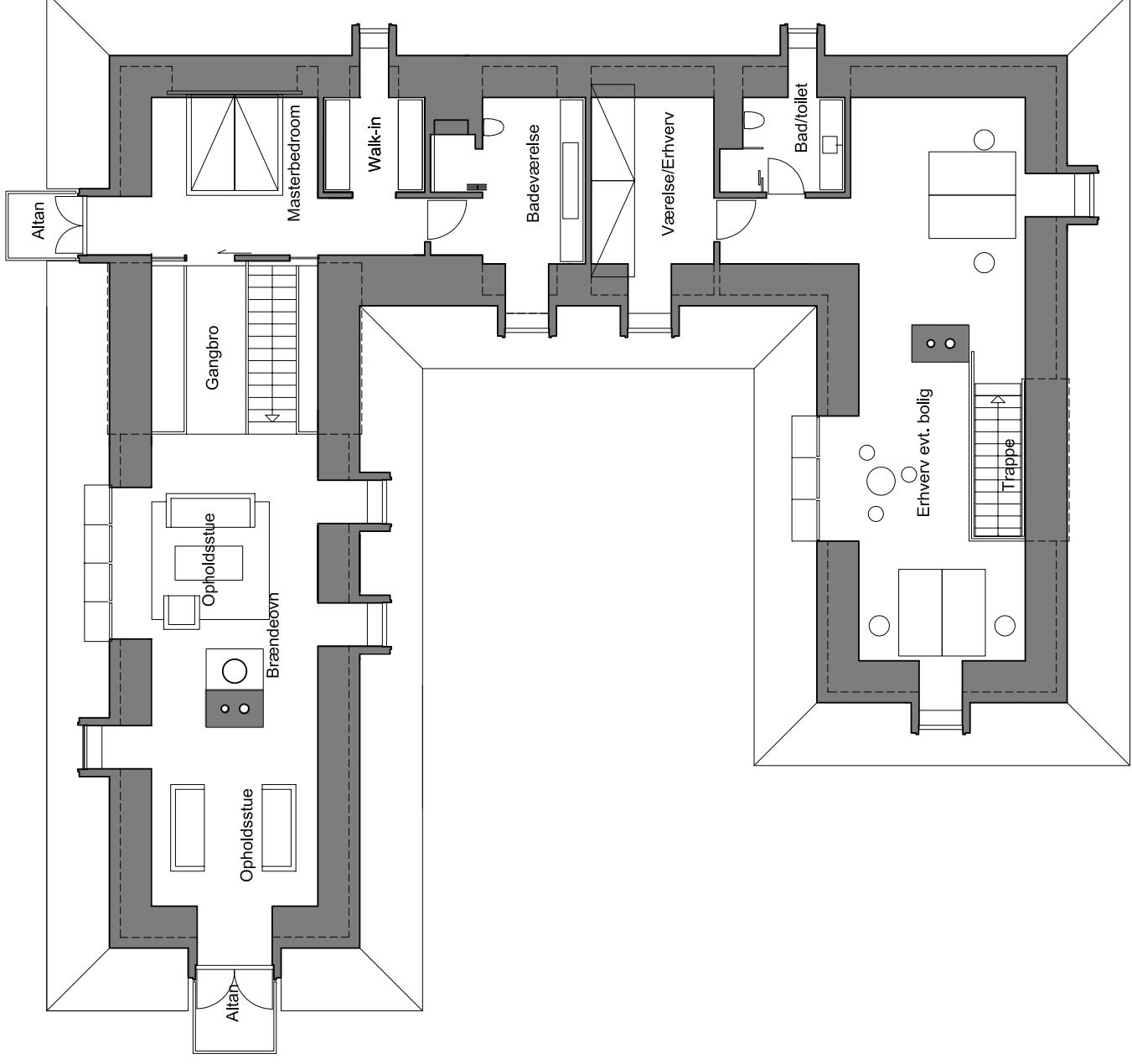
7. MARTS 2008

Ret til mindre ændringer i projekteringsfasen forbeholdes

SKAGEN NORDSTRAND

KLITGÅRDEN I KUNSTNERHUSET I HAVHUSET

KLITGÅRDEN TYPE K-A



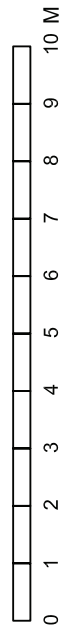
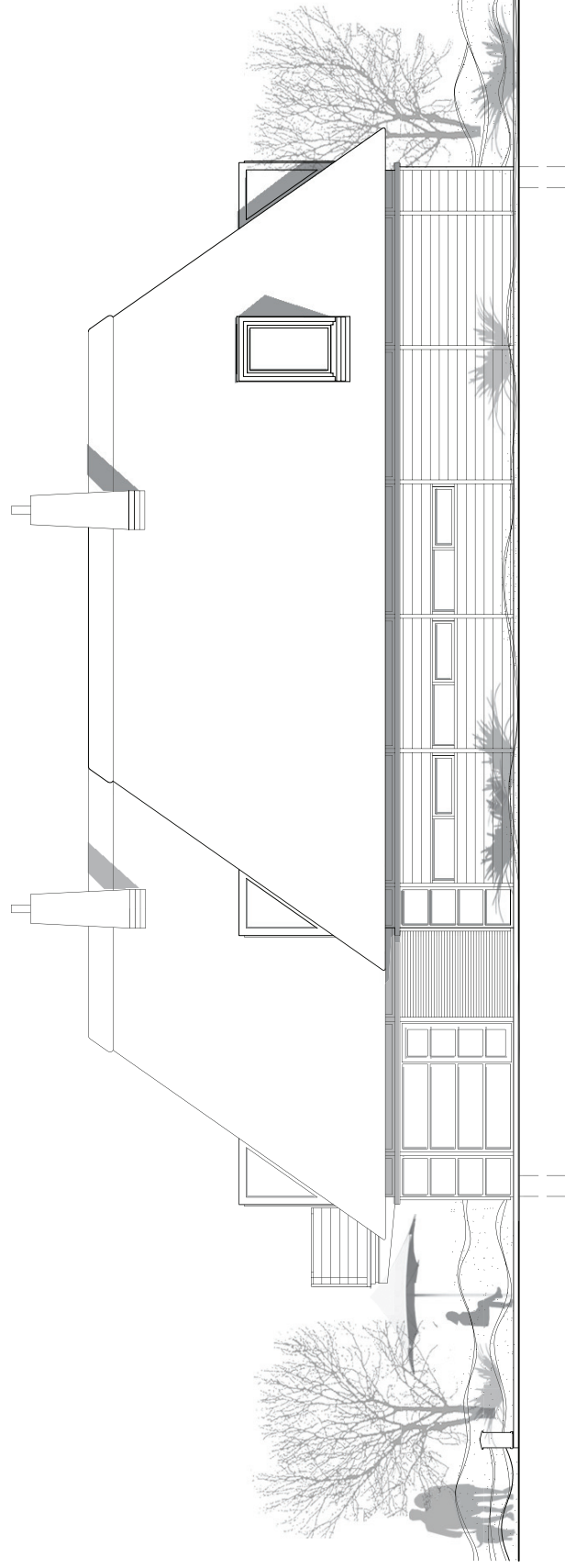
1. SALS PLAN
7. MARTS 2008

Ret til mindre ændringer i projekteringsfasen forbeholdes

SKAGEN NORDSTRAND

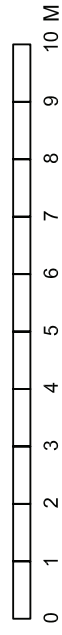
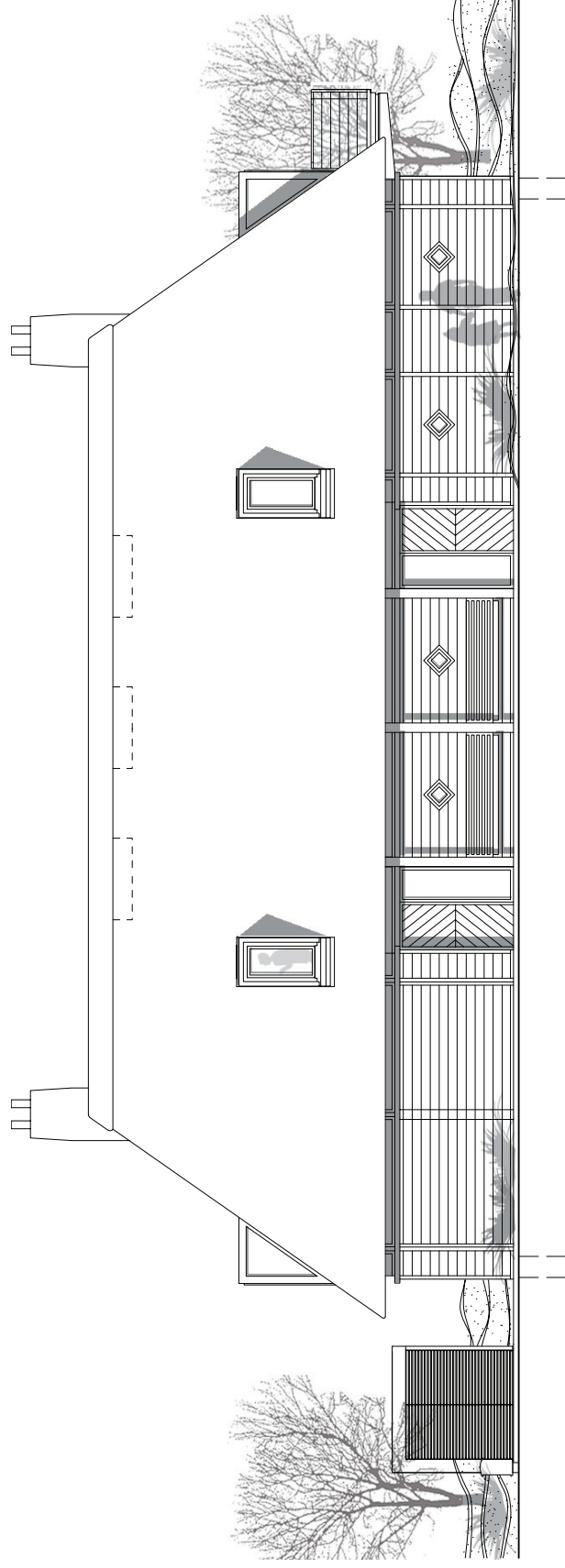
KLITGÅRDEN | KUNSTNERHUSET | HAVHUSET

7. MARTS 2008



Ret til mindre ændringer i projekteringsfasen forbeholdes

KLITGÅRDEN TYPE K-A
FACADE MOD SYD



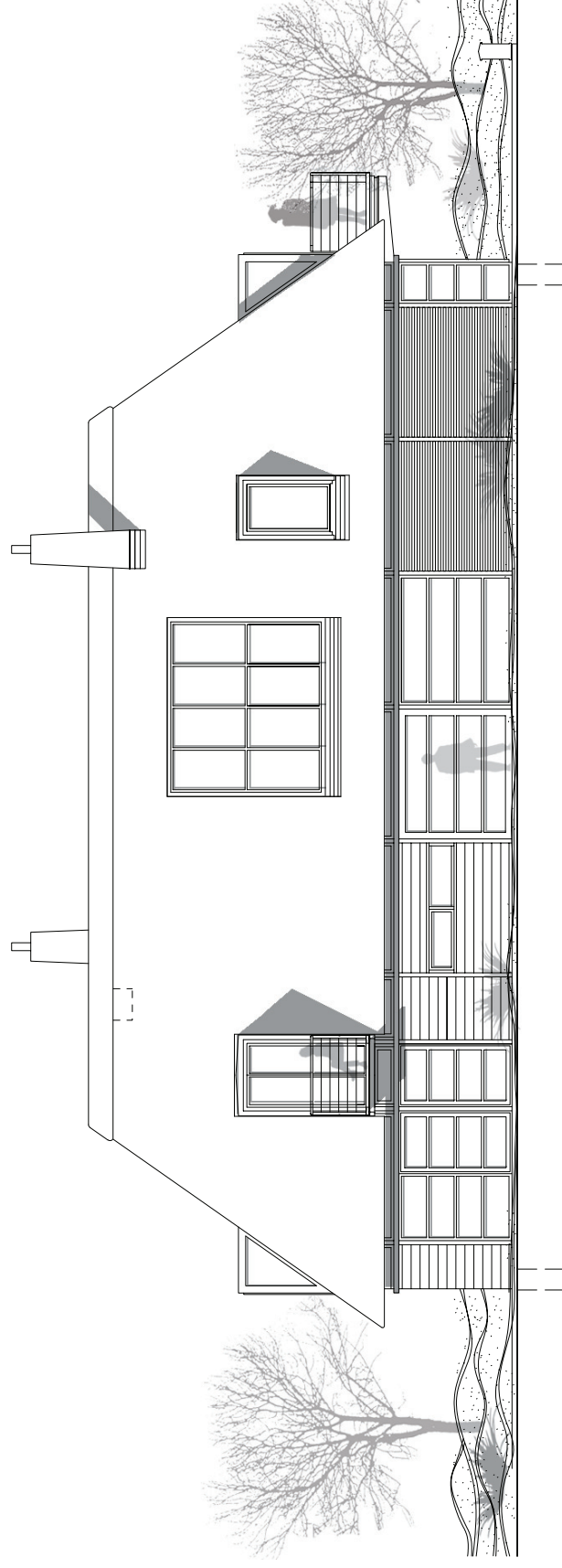
Ret til mindre ændringer i projekteringsfasen forbeholdes

KLITGÅRDEN TYPE K-A
FACADE MOD ØST

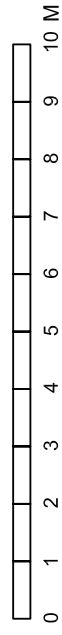
SKAGEN NORDSTRAND

KLITGÅRDEN I KUNSTNERHUSET I HAVHUSET

7. MARTS 2008



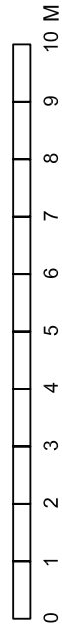
KLITGÅRDEN TYPE K-A
FACADE MOD NORD



Ret til mindre ændringer i projekteringsfasen forbeholdes



KLITGÅRDEN TYPE K-A
FACADE MOD VEST



Ret til mindre ændringer i projekteringsfasen forbeholdes